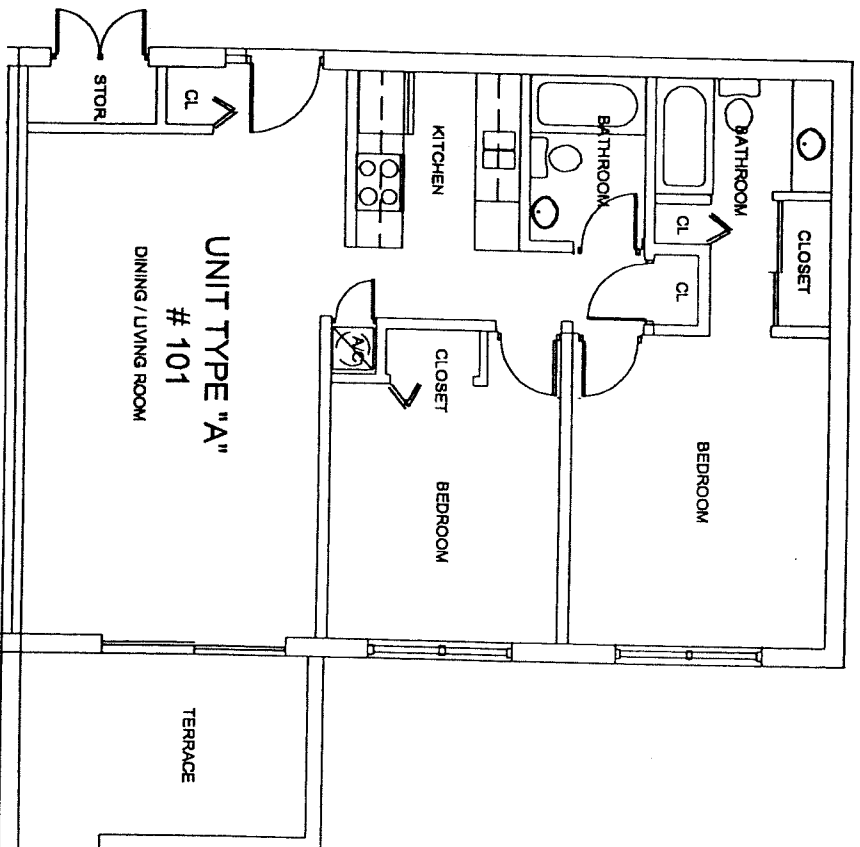


THE HEMINGWAY AT STUART

A Condominium

1. BUILDING EXTERIOR WALKWAYS, ELECTRICAL ROOM, LAUNDRY AND STORAGE ROOMS ARE COMMON ELEMENTS.
2. ALL TERRACES THAT CAN ONLY BE ACCESSED FROM INSIDE AN INDIVIDUAL UNIT ARE CONSIDERED LIMITED COMMON ELEMENTS.
3. ALL DIMENSIONS ARE APPROXIMATE
4. CHASE AND COLUMNS WITHIN EACH UNIT ARE COMMON ELEMENTS.
5. WALL AND COLUMNS SEPARATING UNITS AND OTHER STRUCTURAL ELEMENTS BETWEEN UNITS ARE COMMON ELEMENTS.
6. EXTERIOR WINDOWS AND DOORS ARE COMMON ELEMENTS.



UNIT TYPE "A"

UNIT# 101, 103, 106, 109, 111, 112, 116, 202, 203, 207, 210, 211, 214, 215



UNIT TYPE "A"

JANUARY 18, 2008

JCHAS & ASSOCIATES, P.A.
PLANNING • ARCHITECTURE • INTERIORS
4391 S.W. 11 STREET
MIAMI, FLORIDA 33134
TEL: 305.303.8848 FAX: 305.447.1801

SHEET NO.
6 OF 10